

NEW!

TM

i-Wob®

Patent 5,950,927 and 6,176,440

UP3



Senninger's new UP3 (Universal Pivot Products Platform) uses the proven technologies of the i-Wob, with significant benefits.

i-Wob FEATURES:

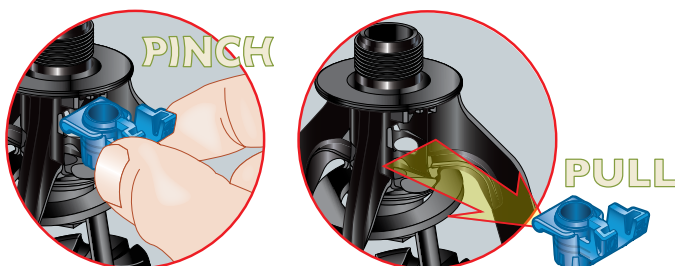
- Designed specifically for use on flexible hose drops
- Patented off-center rotary action design for outstanding uniformity over a large area
- Ultra-low application intensity to preserve soil integrity
- Excellent distance of throw – up to 53 ft (16.2 m) diameter
- Four different groove geometries provide application flexibility
- Low pressure operation 10-20 psi (0.69-1.38 bar) saves money and energy
- Compatible with **The One** weight for stability on flexible hose drops
- Backed by Senninger's 2-year warranty on materials, workmanship and performance

UP3 FEATURES:

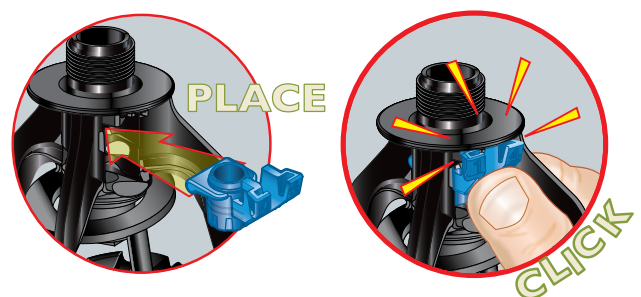
- Easy clean color-coded nozzle
- Dual nozzle carrier option to easily tailor your flow rate to the needs of your crop.
- Integrated base and bracket means fewer parts

EASY CLEAN NOZZLE (patent pending)

NOZZLE REMOVAL



NOZZLE INSTALLATION



Dual Nozzle Carrier (Patent Pending)

For installations needing two different flows from the same sprinkler package.



- Innovative easy change design, just *pinch and pull* - flip - then *place and click*
- Flexible material for durability from possible impact
- Nozzle flows clearly indicated with **high** and **low**
- Same nozzle carrier is universal to the i-Wob, Xi-Wob, LDN and Super Spray

Use the i-Wob UP3 with **The One** weight to help keep the applicator in position in windy conditions. The ribbed outer edge helps facilitate installation. 0.85 pounds

Nozzle Visibility



- Color-coded
- The nozzle numbers on the ears correspond to orifice size in 64ths of an inch
- Half-sizes clearly marked on the ears and with notches on the lower edge
- Same nozzle is universal to the i-Wob, Xi-Wob, LDN and Super Spray
- Five-year warranty on nozzle orifice



AVAILABLE DEC. 2010



| i-Wob UP3 | Standard Angle 6-Groove Small Droplet | Standard Angle 9-Groove Medium Droplet | Low Angle 9-Groove Medium Droplet | Low Angle 6-Groove Large Droplet |
|----------------------------------|---------------------------------------|--|-----------------------------------|----------------------------------|
| Nozzle Sizes | | | | |
| Minimum | #10 9/64" [3.57 mm] | #6 3/32" [2.38 mm] | #6 3/32" [2.38 mm] | #12 3/16" [4.76 mm] |
| Maximum* | #26 13/32" [10.32 mm] | #26 13/32" [10.32 mm] | #26 13/32" [10.32 mm] | #26 13/32" [10.32 mm] |
| Flows | | | | |
| Minimum | 2.25 gpm [511 L/hr] | 0.82 gpm [186 L/hr] | 0.82 gpm [186 L/hr] | 3.16 gpm [718 L/hr] |
| Maximum | 20.50 gpm [4656 L/hr] | 20.50 gpm [4656 L/hr] | 20.50 gpm [4656 L/hr] | 20.50 gpm [4656 L/hr] |
| Maximum Spacing** | | | | |
| at 6 ft [1.8 m] ground clearance | 18 ft [5.5 m] | 20 ft [6.1 m] | 18 ft [5.5 m] | 15 ft [4.6 m] |
| Pressure at Nozzle | | | | |
| Minimum | 10 psi [0.69 bar] | 10 psi [0.69 bar] | 10 psi [0.69 bar] | 10 psi [0.69 bar] |
| Maximum | 20 psi [1.38 bar] | 20 psi [1.38 bar] | 20 psi [1.38 bar] | 20 psi [1.38 bar] |

* It is recommended that larger nozzle sizes be used only on soils and slopes that can handle higher application rates.

** For optimum performance Senninger recommends the use of maximum spacing for 1-2 spans only.

Maintenance note: Keep i-Wobs above crop canopy when outlet spacing exceeds 10 ft [3 m]. This is especially important on high profile crops.