

Universal Motion Components

Quality Irrigation Products



ISO 9001:2008
CERTIFIED



UMC

www.umcproducts.com

2920 Airway Ave, Costa Mesa, Ca. 92626
phone: 714.437.9600 fax: 714.437.9700

Driveline Couplers



CX Coupler

Designed for use as a universal preassembled coupler.

UMC's CX Coupler is a shock-attenuating drive connection between the gearmotor and final drive gearbox. Its design reduces set up time for new center pivots and laterals. Similarly, it is the perfect compliment for towable systems due to the ability to control disengagement at the gearbox. From the service tech's perspective, it is a must-have universal solution because this one coupler fits all brands of center pivots and laterals.

Model Number	Description
CX-1	One Size Fits All

Features and Benefits

Our patented, preassembled drive connection fits a 3/4", 7/8", and 1" drive shafts as well as metric sizes. It features three 3/8" SQUEX bolts for easy one wrench installation.

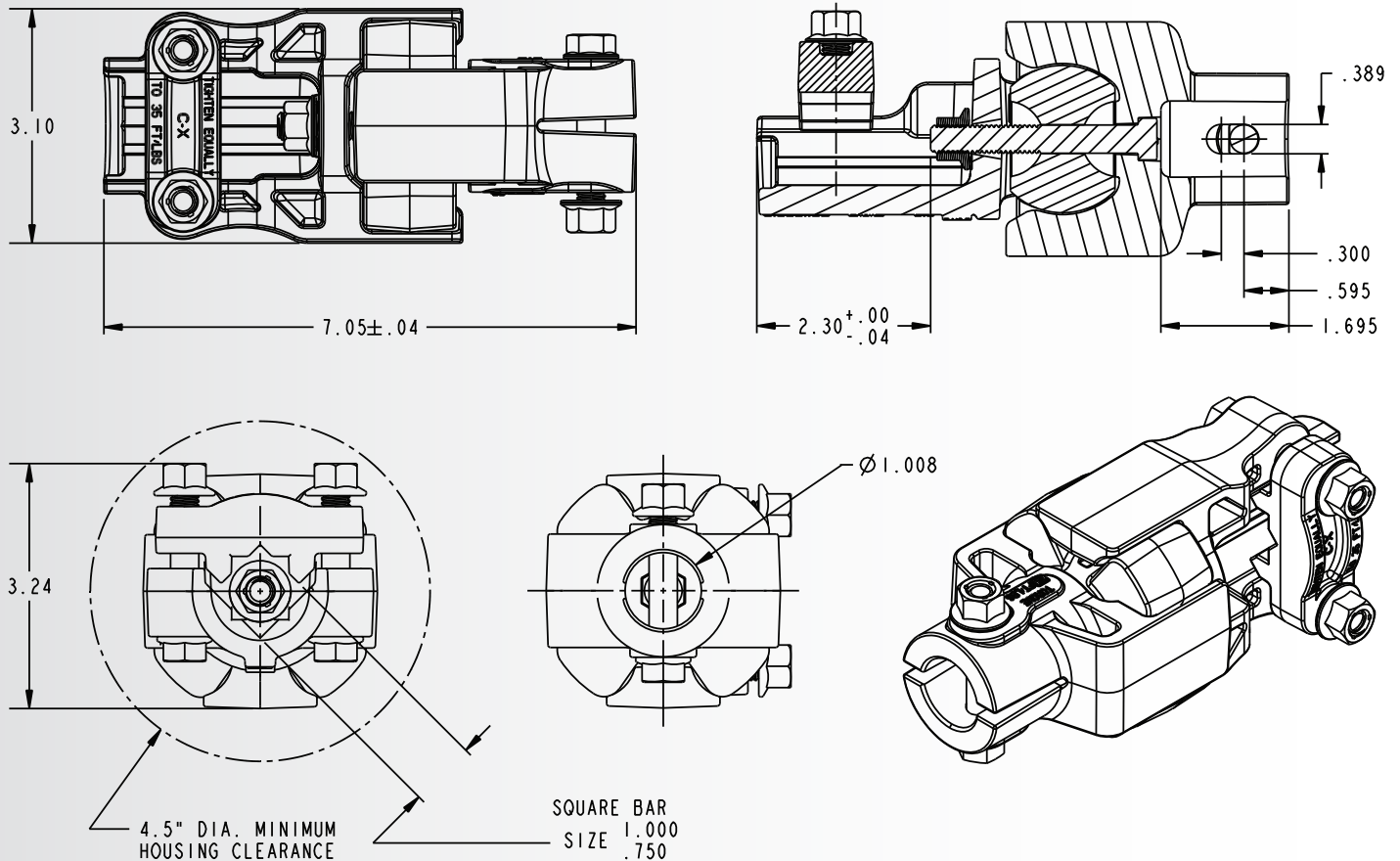
- ▶ Units come pre-assembled
- ▶ Saves time in the field
- ▶ Meets and exceeds the existing UMC coupler performance
- ▶ Universal design - fits all shaft sizes - standard and metric
- ▶ UV stabilized Urethane puck
- ▶ Easily converts from Non-Towable to Towable
- ▶ Centering rod for maintaining alignment at peak torque
- ▶ UMC SQUEX-Bolts (Square Neck - Hex Head) for easy one wrench installation

sales@umcproducts.com

Universal Motion Components

Dimensional Drawing

CX Pre-Assembled Driveline Coupler



sales@umcproducts.com



www.umcproducts.com



Universal Motion Components, Co. Inc.
2920 Airway Ave, Costa Mesa, Ca. 92626
Phone - 714-437-9600 Fax - 714-437-9700
Web - <http://www.umcproducts.com>
E-mail - sales@umcproducts.com